

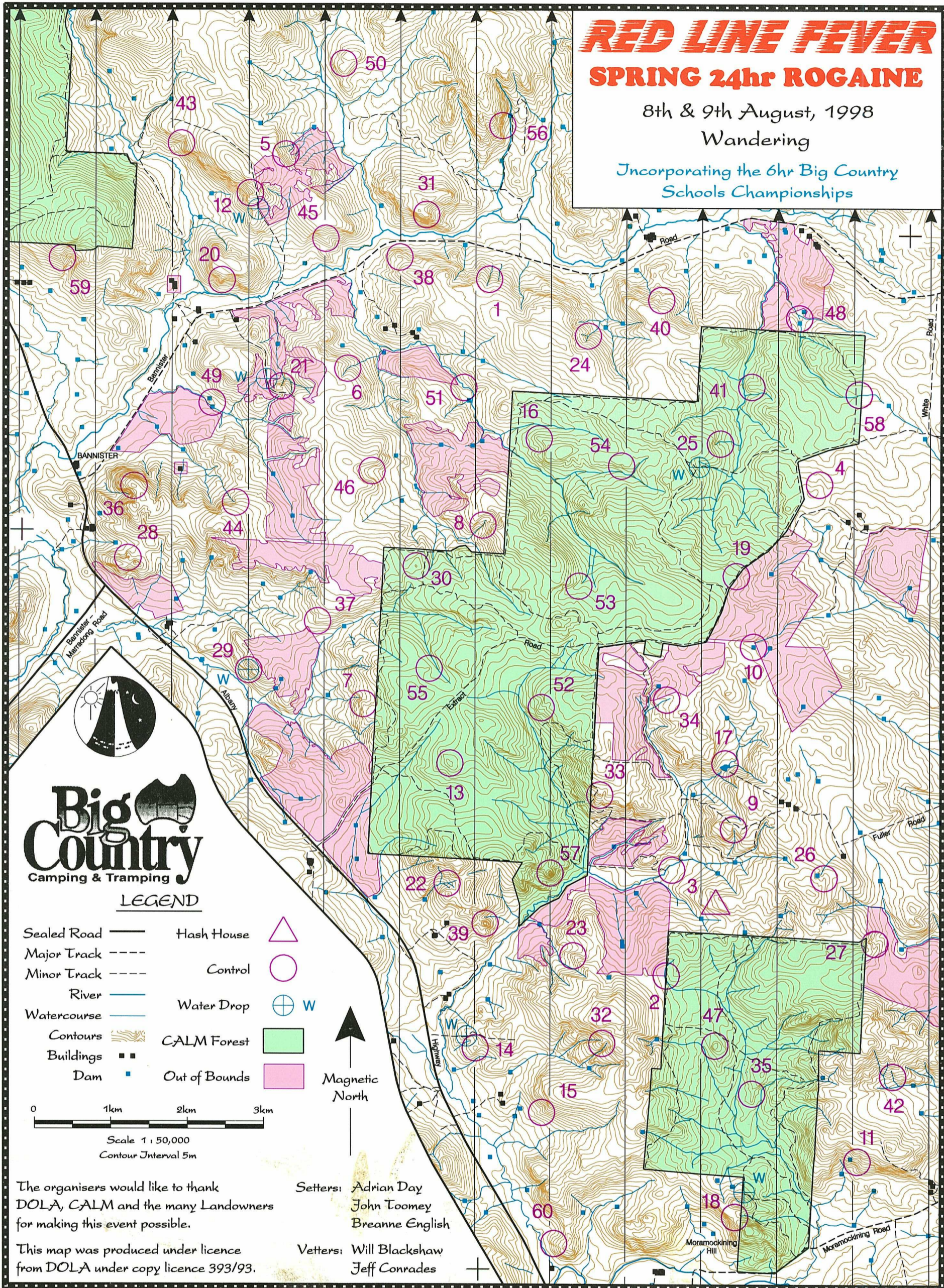
RED LINE FEVER

SPRING 24hr ROGAINE

8th & 9th August, 1998

Wandering

Incorporating the 6hr Big Country
Schools Championships



Big Country
Camping & Tramping

LEGEND

- | | | | |
|-------------|-------|---------------|-----|
| Sealed Road | — | Hash House | △ |
| Major Track | - - - | Control | ○ |
| Minor Track | - - - | Water Drop | ⊕ W |
| River | — | CALM Forest | ■ |
| Watercourse | — | Out of Bounds | ■ |
| Contours | — | | |
| Buildings | ■ | | |
| Dam | ■ | | |

0 1km 2km 3km
Scale 1:50,000
Contour Interval 5m



The organisers would like to thank
DOLA, CALM and the many Landowners
for making this event possible.
This map was produced under licence
from DOLA under copy licence 393/93.

Setters: Adrian Day
John Toomey
Breanne English
Vetters: Will Blackshaw
Jeff Conrades

RED LINE FEVER

Control	Points	Description	Control	Points	Description
1	20	The watercourse	36	70	The summit.
2	20	The crop corner	37	70	Top of the rocky spur
3	20	A fence corner	38	70	Between two knolls on the spur
4	20	The spur	39	70	The knoll
			40	70	The gully - a watercourse
5	30	The middle gully	41	70	The rocky spur - top of.
6	30	Bend in the watercourse	42	70	The watercourse
7	30	The (very) rocky spur			
8	30	The watercourse	43	80	The gully
9	30	The gully	44	80	Head of the watercourse
10	30	The dam - north-west side	45	80	The spur
11	30	The gully	46	80	The gully - a copse of trees on the side.
			47	80	The knoll
12	40	The gully - a rock embankment	48	80	The dam - northern side in a copse of trees.
13	40	The summit. South side of a thicket			
14	40	The knoll	49	90	Between the dams
15	40	The spur	50	90	The shallow gully - a clearing
16	40	The spur	51	90	The watercourse bend
17	40	The dam - north side	52	90	The spur - steep tip of - in some boulders
18	40	The saddle	53	90	The gully
19	40	The track bend	54	90	The gully
			55	100	The spur - a knoll
20	50	The spur	56	100	The spur - in a clearing at the top of a 10m cliff
21	50	Head of the watercourse	57	100	The knoll
22	50	The watercourse junction	58	100	The marshy watercourse - between the track and the fence.
23	50	The spur, on the edge of a rocky breakaway			
24	50	The watercourse junction			
25	50	The southern watercourse	59	150	The western gully
26	50	The rocky spur	60	150	The rocky breakaway
27	50	The gully - a watercourse junction			
28	60	The knoll			
29	60	The gully			
30	60	The rocky knoll			
31	60	The spur - a knoll			
32	60	The knoll			
33	60	The knoll			
34	60	The gully			
35	60	The spur			